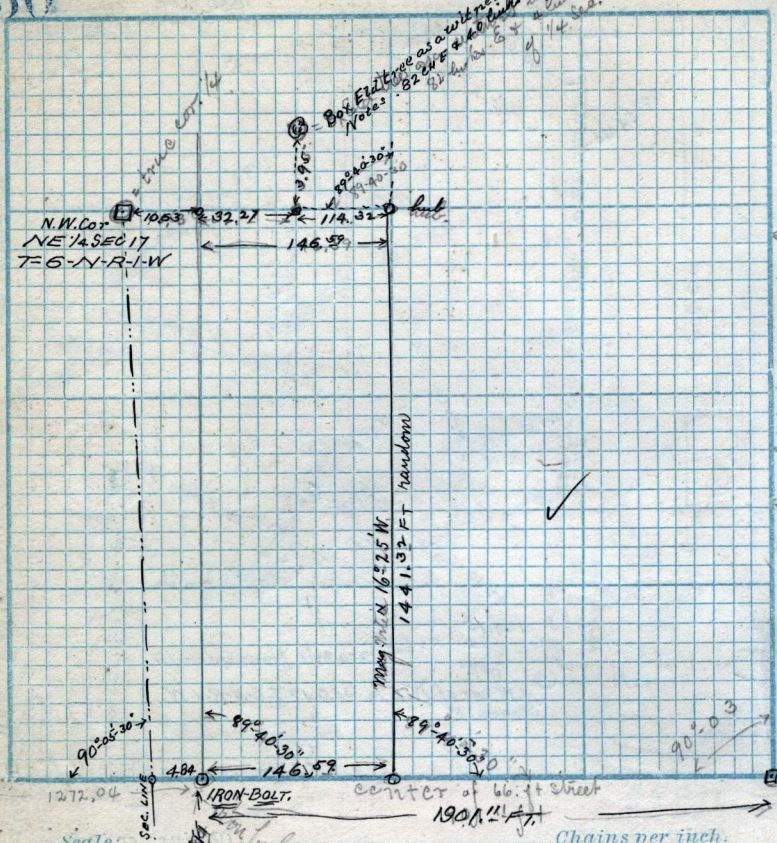


= N.E. Cor. S E 1/4 SEC 7 T-S. N. R-1-W



center line of Washington Ave

399+85.33

Scale:

Chains per inch.

See page 129  
this book.  
this book.  
See H-47  
A-179

Survey of Walnut-hill Addition, in Lynn, for  
B. S. Stacy & Co. June, 1890.

Jan'y 4-1891

Copy of deed from Mary E. Hutchins administratrix of the estate of Wm. B. Hutchins (deceased) to John A. Hutchins, Part of N. W. 1/4 of Sec. 17 T-6-N-R-1-W. Preg. 18.35 ch N. and 19.20 ch W. of S. E. cor. of said 1/4 Sec. 17 5.07 ch N. 734<sup>2</sup>15 ft. 1.50 ch, W 5.22 ch S 6.34 ch, E 6.21 ch to leg 4.3 a,

TIES or reference points to the above Iron Bolt  
S. W. 48.84 ft. to Red Elder tree inside Pircees lot, near  
N. W. 109.23 " to S. E. cor. Brick house